

# THE "STOCK GRID"

Yagi Directional LPDA Antenna 4G/LTE & 5G 12dBi  
698~960/1710~2700/3300~4000 MHz

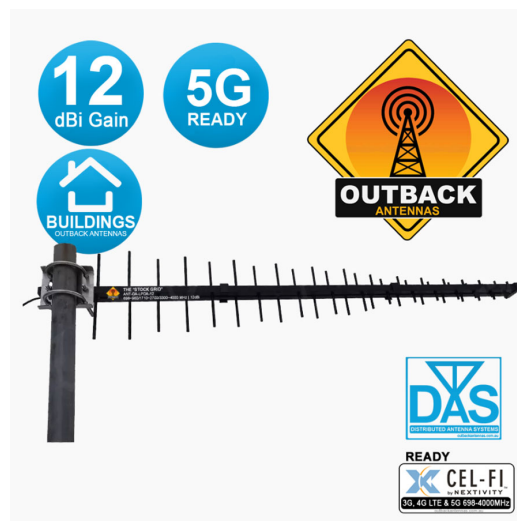


## The "STOCK GRID"

Yagi Directional LPDA Antenna 4G/LTE, 5G  
(698~960/1710~2700/3300~4000 MHz )

**Code: ANT-OA-STOCK-GRID-LPDA-12**

Quality welded aluminium directional LPDA antenna suited for the harsh Australian conditions.



### Electrical Specifications

Frequency Range	698~960/1710~2700/3300~4000 MHz
Gain	12dBi
VSWR	≤2
Polarization	Vertical
Horizontal Beamwidth	36°
Vertical Beamwidth	32°
Input Impedance	50Ω
Max. Power	100W
Lightning protection	DC Ground
Front To Back Ratio	≥18 dB
Weatherproof	IP67

### V.S.W.R

### Mechanical Specifications

Connector	N Female
Mount Type	Max 50mm Pole
Dimensions	Length 957± 10mm
Weight	1.00Kg
Max Wind Load	60m/s
Radome Material	Welded Aluminium
Working Temperature (°C)	-40°C ~ +55°C
Storage Temperature (°C)	-50°C ~ +65°C
Antenna Colour	Black

### Vertical Radiating Patterns

[www.outbackantennas.com.au](http://www.outbackantennas.com.au) | [sales@outbackantennas.com.au](mailto:sales@outbackantennas.com.au) | 1300 762 568